

# MULTIMAX

by **ESWINDOWS**

Residential Windows  
and Doors



# QUALITY MEETS AFFORDABILITY

The Multimax line was developed for multi-family projects with high security measures in collaboration with leading architects and designers.

More than 30 years of experience as a window and door manufacturer has allowed us to develop this line of products withstanding the stringent Miami-Dade County protocols.



# Features

- Single source warranty: in-house aluminum and glass processing
- Laminated glass by industry leader TecnoGlass
- Heat strengthened and annealed glass in clear and gray as an option
- Superior energy efficiency with Solarban 70 Low-E glass
- White and bronze aluminum finishes
- Corrosion-resistant hardware for coastal areas as standard

## WINDOWS

---

**ES-MX1000** Single Hung Window

**ES-MX1500** Fixed Window

**ES-MX2000** Horizontal Roller / Sliding Window

## DOORS

---

**ES-MX3000** French Door / Swing Door

**ES-MX4000** Sliding Glass Door

# WINDOWS

## SINGLE HUNG WINDOW

# ES-MX1000

The ES-MX1000 is a single hung window that can be adapted to any architectural design. The system follows strict construction specifications and architectural standards of safety and durability. This window system can be implemented in residential and commercial construction projects.

### System Description

- Maximum width (Equal): 53 1/8" width x 63" height
- Maximum height (Equal): 74 1/4" height x 42" width
- Maximum width (Unequal): 53 1/8" width x 50 5/8" height
- Maximum height (Unequal): 74 1/4" height x 26 1/2" width
- Frame depth: 2 3/8"
- Flange frame available
- Designed for 5/16" annealed and heat strengthened glass options
- LMI and SMI
- Configuration: OX
- Tested water infiltration: 12 psf.
- Tested design load:
  - +80/-90 psf. (LMI)
  - +80/-120 psf. (SMI)
- Laminated glass:
  - 1/8" ANN + 0.09 PVB + 1/8" ANN
  - 1/8" HS + 0.09 PVB + 1/8" HS
- U-value: 1.04 on clear laminated SB 70
- SHGC: 0.29 on clear laminated SB 70

### Features

- Low-E Solarban 70 available
- Screen option available
- Block and tackle and ultra-lift balance options
- White and bronze aluminum finishes
- Sweep lock and vent latch handles available
- Heavy-duty meeting rail available



FIXED WINDOW

# ES-MX1500

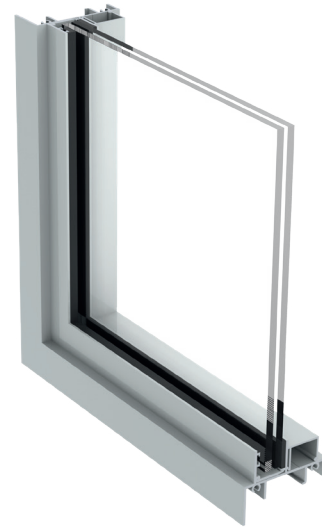
ES-MX1500 is an impact-rated fixed window available in a variety of shapes allowing a wide range of architectural applications. This window is used to bring light to places with difficult accessibility.

## System Description

- Maximum size: 36" width x 120" height
- Frame depth: 2 3/8"
- Flange frame available
- Designed for 5/16" annealed glass and 7/16" heat strengthened glass options
- LMI and SMI
- Tested water infiltration: 15 psf.
- Tested design load:
  - +70/-80 psf. (LMI)
  - +100/-140 psf. (SMI)
- Laminated glass:
  - 1/8" ANN + 0.09 PVB + 1/8" ANN
  - 3/16" HS + 0.09 PVB + 3/16" HS
- U-value: 1.01 on clear laminated SB 70
- SHGC: 0.31 on clear laminated SB 70

## Features

- Low-E Solarban 70 available
- White and bronze aluminum finishes
- PVB laminated glass with coating options available
- Architectural shapes



# WINDOWS

---

## HORIZONTAL ROLLER / SLIDING WINDOW

# ES-MX2000

ES-MX2000 is an impact-rated horizontal sliding window. This product ensures an easy and smooth opening allowing maximum ventilation. ES-MX2000 can be used on a wide variety of architectural applications.

### System Description

- Maximum size: 63" width x 111" height
- Frame depth: 2 3/8"
- Sill height: 3 5/16"
- Flange and flush frame available
- Designed for 5/16" annealed and heat strengthened glass options
- LMI and SMI
- Configurations: OX, XO, XOX
- Tested water infiltration: 12 psf.
- Tested design load:
  - +80/-90 psf. (LMI)
  - +82/-108 psf. (SMI)
- Laminated glass:
  - 1/8" ANN + 0.09 PVB + 1/8" ANN
  - 1/8" HS + 0.09 PVB + 1/8" HS
- U-value: 1.06 on clear laminated SB 70
- SHGC: 0.28 on clear laminated SB 70

### Features

- Low-E Solarban 70 available
- Screen option available
- White and bronze aluminum finishes
- PVB laminated glass with coating options available
- Sweep lock and vent latch handles available
- Heavy duty meeting rail available



# The Power of **Quality**



# DOORS

## FRENCH DOOR / SWING DOOR

# ES-MX3000

ES-MX3000 is an impact-rated french door designed with the highest technical standards in safety and durability. This door system can be used in a wide range of residential and commercial applications.

### System Description

- Maximum size:
  - Single leaf: 40" width x 96" height
  - Double leaf: 76" width x 96" height
- Frame depth: 4"
- Designed for 5/16" heat strengthened glass options
- Prepped handle bores options only
- Tested water infiltration: 13.5 psf. (single) 15 psf. (double)
- Tested design load: +80/-70 psf.
- Laminated glass:
  - 1/8" HS + 0.09 PVB + 1/8" HS
- U-value: 1.04 on clear laminated SB 70
- SHGC: 0.23 on clear laminated SB 70

### Features

- Low-E Solarban 70 available
- White and bronze aluminum finishes
- PVB laminated glass with coating options available





SLIDING GLASS DOOR

# ES-MX4000

ES-MX4000 is an impact-rated sliding glass door system designed with the highest technical standards in safety and durability. This system is very versatile and can be implemented in interiors or exteriors for a wide range of residential and commercial projects.

## System Description

- Maximum panel size:
  - 48" width x 108" height
  - 48" width x 111" height (2 panel with reinforcements)
- Frame depth: 5 3/8"
- Sill height: 2 5/8"
- 2 track, and up to 4 panel configuration with screens
- Configurations: OX, XO, OXO, OXXO
- Tested water infiltration: 12 psf.
- Tested design load:
  - +70/-80 psf.
  - +80/-103 psf. (OX and XO only)
- Laminated glass:
  - 3/16" HS + 0.09 PVB + 3/16" HS
- U-value: 1.02 on clear laminated SB 70
- SHGC: 0.30 on clear laminated SB 70

## Features

- Low-E Solarban 70 available
- Screen option available
- White and bronze aluminum finishes
- PVB laminated glass with coating options available
- Reinforcement available



# Colors & Finishes



BRONZE



WHITE



# Accessories

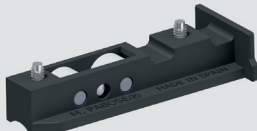
Every Multimax window and door benefits from a combination of premium materials, cutting-edge production technology and the talent of an experienced team. All of these result in precise stylish designs that will endure over time.



Vent Latch  
ES-MX1000  
ES-MX2000



Sweep Lock  
ES-MX1000  
ES-MX2000



Horizontal Roller  
ES-MX2000



Involute  
ES-MX4000



Roller  
ES-MX4000

# MULTIMAX

by **ESWINDOWS**



QUALITY  
MEETS  
AFFORDABILITY

**ESWINDOWS**

MULTIMAX

All content in this document is protected by copyright laws and is property of E.S. WINDOWS, LLC, its affiliates, or a licensed third party and may be modified without prior notice. Reproduction, modification, dissemination, distribution, sell or transfer, either in whole or part, without prior written permission is prohibited.  
2021 © E.S. WINDOWS, LLC.

V - Mar 2021